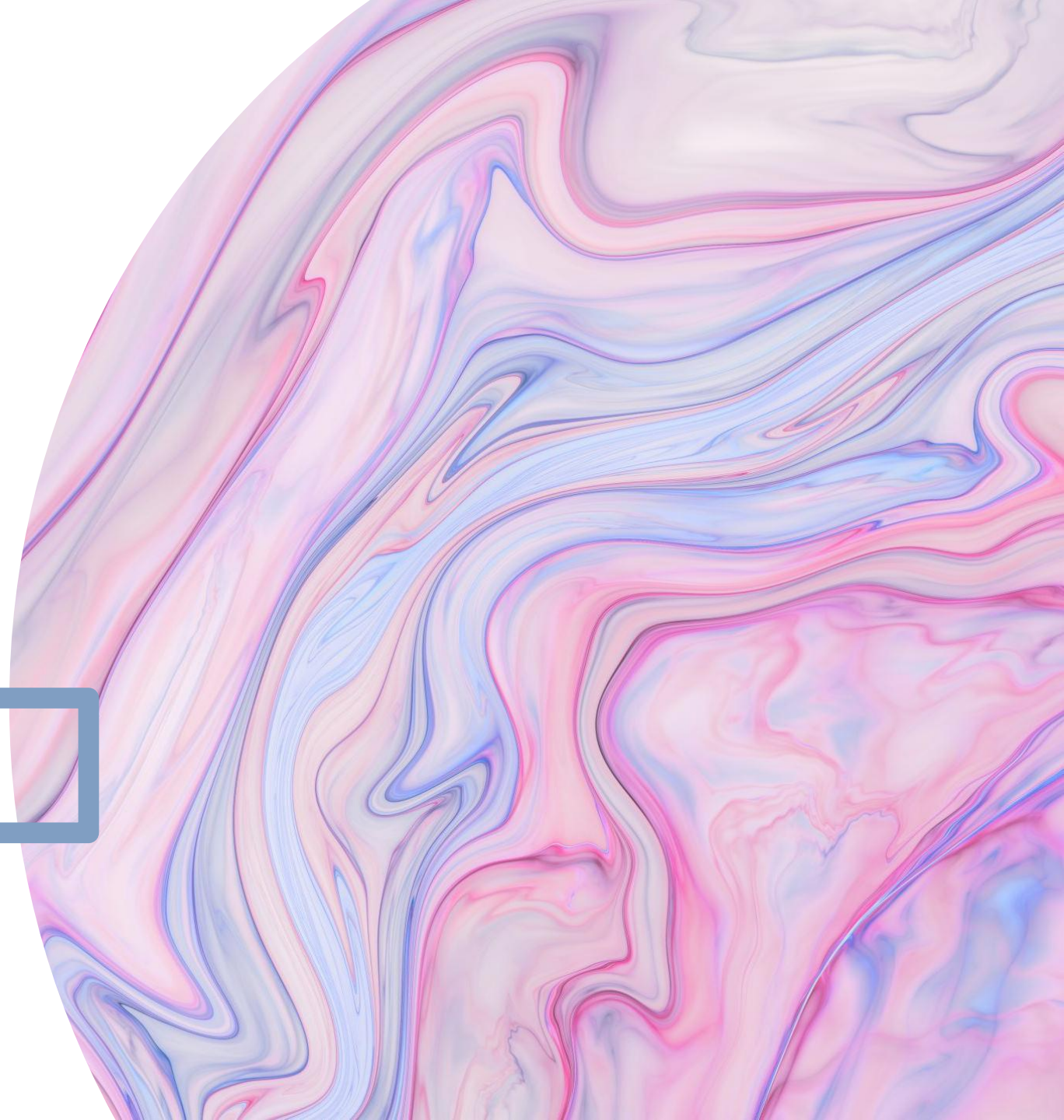




Baltimore Bead Society Bead Challenge

June 2023



Entry 1:
Edged leather
pendant with
beaded
hummingbird
detail hung from
a green rope



#1



#2



Entry 2:
Braided tri-color leather
choker with sea-inspired
bead embellishment
and matching earrings





Entry 3:
Blue beaded rope
with wrapped focal
bead and leather
ties



Entry 4: Purple leather cuff with stitched leather details, beaded focal, and a snap closure



Entry 5: Ocean inspired wall hanging with leather background elements, twine and charm details, and a beaded frame





Entry 6:

Textured leather statement piece with ruffled leather, chip bead details, and a toggle closure



Entry 7: Red leather cuff with coin, chain, and bead details and a snap closure

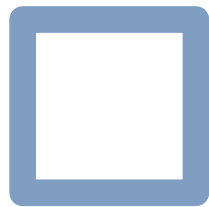


Entry 8:
Glass yellow-green
and black beads on
a leather cord with
slip knot closure





Entry 9:
Brown leather leaf earrings with heart-shaped bails and a cupchain vein detail in gold and orange




Entry 10:
Copper wirework
necklace with
turquoise leather
flowers



Entry 11: Gold charms with leather, beach-motif details, set off by a blue beaded necklace





Entry 12:
Leather shoulder
drape with long fringe
and seed bead leaf
details

Entry 13:

Large, glass turquoise beads strung on gray leather cord with metal O-rings between the beads



Entry 14:
Brown
leather leaf
earrings with
a heart
shaped bail
and bead
accents



Entry 15: Triple-cord leather necklace featuring circular leather details in white, black, gray, and blue.

