

# Baltimore Bead Society June 2025 Challenge

Knots and Macrame

# Entry 1 – Dreamcatcher



Entry 1 is an impressive dream catcher wall hanging, featuring the tree of life, and embellished with an assortment of beads.

## Entry 2 – Spring in Maryland

Entry 2 is a celebration of spring. This lovely necklace features a macrame base, thoughtfully adorned with floral beadwork, metal charms, and a magnificent, green focal bead.



# Entry 3 – Blooming Peony



Entry 3 is a showy blossom with a center of stunning turquoise knots and sparkling beads.

## Entry 4 – Amber Bead



Entry 4 is striking in its simplicity. A white spiral rope glides through the namesake amber focal, while a scallop shell closure completes the piece.



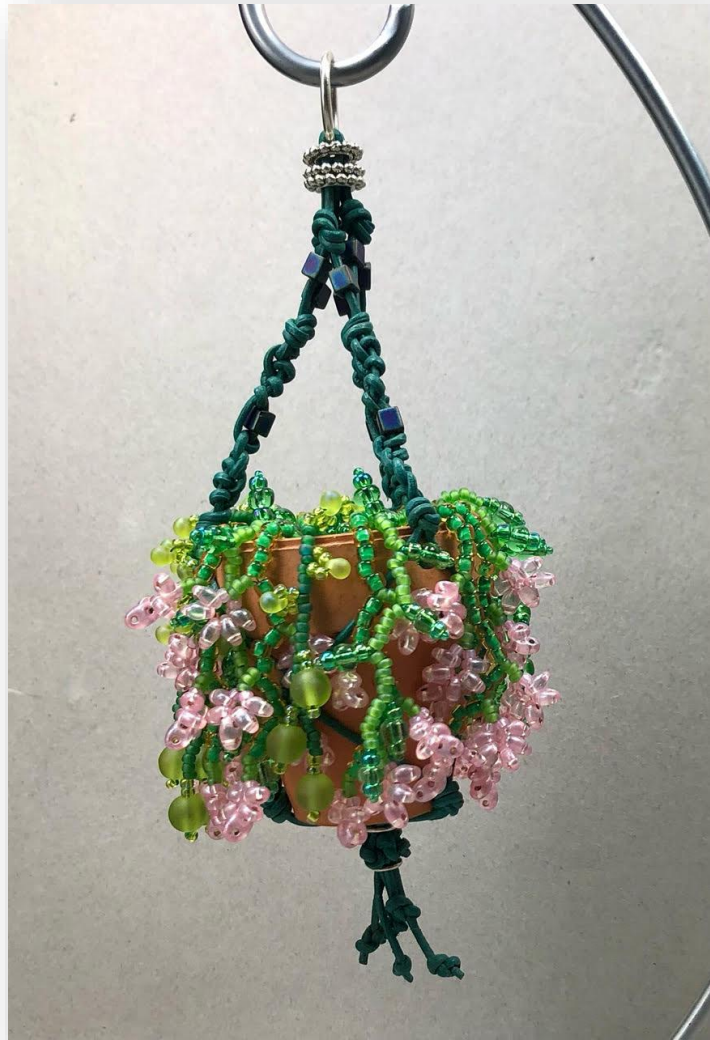
# Entry 5 – Beaded Josephines



Entry 5 features a row of Josephine knots in deep, navy-blue paracord. Cheerful, multi-colored seed bead swags add an element of fun, brightening the necklace.



# Entry 6 – Spring of '73



Entry 6 invites you to enjoy spring year-round! This macrame plant holder cradles a terra cotta colored pot overflowing with dainty, seed-bead vines and blossoms

# Entry 7 – Triple Josephine Knot in leather



Entry 7 is a bracelet for any wearer. It features a triple-strand Josephine Knot in rich, brown leather set off by brass crimp beads and findings.

## Entry 8 – Summer Colors



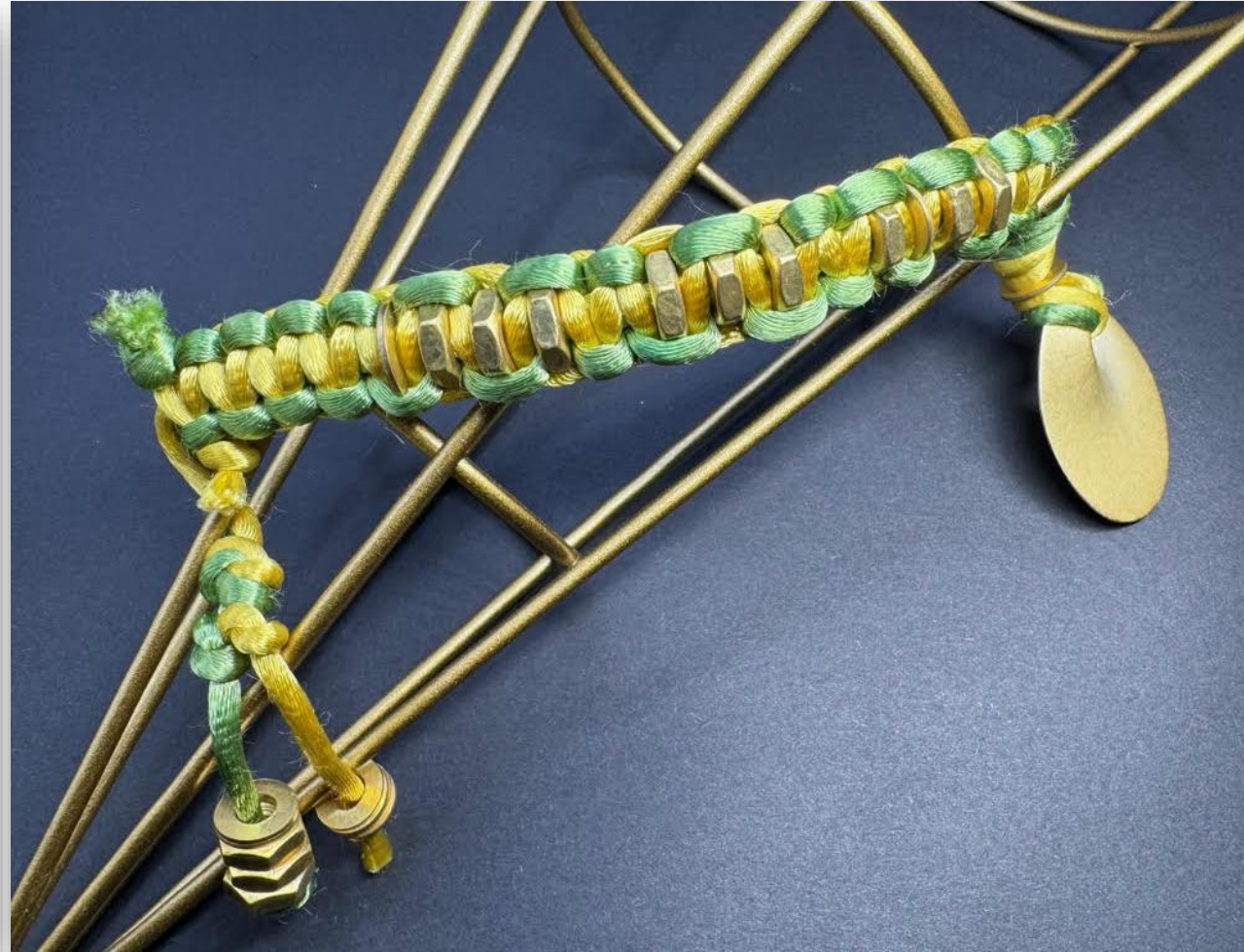
Entry 8 makes a statement, and the statement is, “I’m ready for summer!” This bracelet features a spiral rope, jewel toned beads, metal accents, and a sliding, square knot closure.

# Entry 9 – Paracord Ranger Bead Pace Counter



Entry 9 is a tricolor manual device used to count paces and estimate walking distance. The beads are made of Celtic Button Knots. When all of them are moved, the traveler has gone 400 paces (about 1000 feet or 0.2 miles).

# Entry 10 – International Morse Code Bracelet



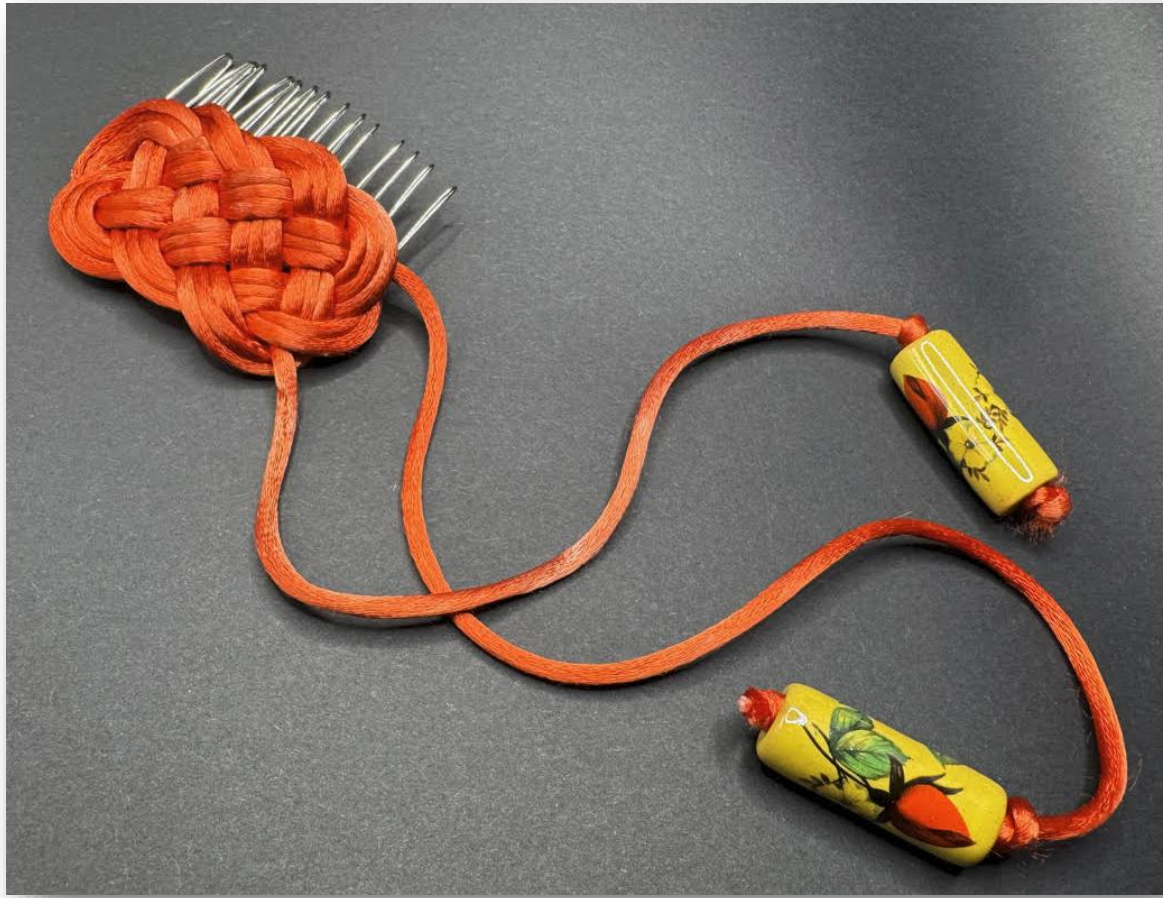
Entry 10  
uses bicolor  
square  
knots and  
small nuts  
and washers  
to spell out a  
secret  
message!

# Entry 11 – The Turtle and the Hair



Entry 11 is a whimsical piece, perfect for fans of hair adornment. It features small beads, leaf knots and a meticulously crafted turtle all dangling from a gold bobby pin.

# Entry 12 – Ocean Plait Mat



Entry 12 features an intricate plait in coral, woven onto a hair comb. Two yellow cylinder beads dangle from the main piece, adding length and movement.